
Global Education Office
Reves Center for International
Studies
The College of William & Mary

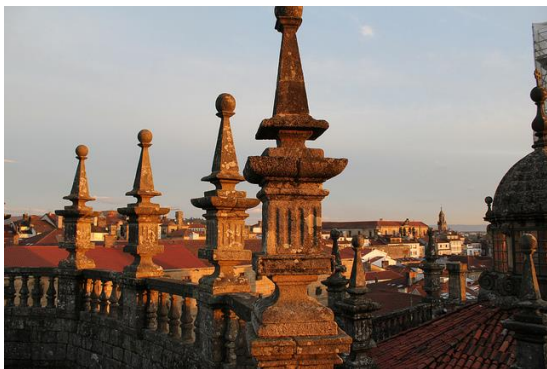


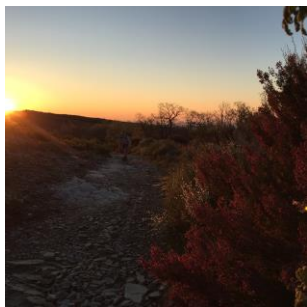
PHOTO COURTESY OF SYLVIA MITTERNDORFER

SANTIAGO DEL COMPOSTELA SUMMER HANDBOOK

Table of Contents

Global Education Office	1
Reves Center for International Studies	1
The College of William & Mary	1
☞☞☞Table of Contents	2
William & Mary	3
Santiago de Compostela	3
☞☞☞	4
Visa Information and Budgeting	5
Preparation for the Camino	7
☞☞☞Traveling to Santiago de Compostela	8
☞☞☞Coursework	9
Excursions & Activities	9
☞☞☞Housing and Meals	11
Communication	12
Health & Safety	13
Travel & Country Information	14
About Santiago de Compostela	15
El Camino	16
Contact Information	17

William & Mary
Santiago de Compostela



Visa Information and Budgeting

TRAVEL DOCUMENTS

Passport

- You should apply as early as possible before departure to secure your passport through a Passport Agency (found in major cities), a local issuing office, a Federal or State Court House, or a Class I Post Office. Start the process early so that there will be plenty of time to resolve any problems that may arise. If you will be using your current passport, make sure that it is good for six months after your return to the U.S. If it is not, you will need to renew it.
- Guidelines on renewing your passport or applying for a new one can be found at:
<https://travel.state.gov/content/passports/en/passports.html>



Visa

- No visa is necessary for American citizens for a stay in Spain of less than 90 days.
- If you are asked by immigration/custom officers at the airport for your intent of visit, you must tell them you are a tourist. Because you are in classes for less than 25 hours a week, you are considered a tourist by the Spanish government.

BUDGET

- Your budget for incidental expenses will depend on your personal taste and the amount of independent travel you intend to do before or after the program. The program fee covers most of your necessary expenses: tuition, housing, and transportation and entrance fees for program excursions, as well as a meal stipend that should cover most (if not all) of your meals. Students in the past have suggested budgeting roughly \$100/week for outside activities, shopping, etc. It is very possible to live for considerably less than this. Naturally, if you plan to do a significant amount of shopping and/or traveling, you should budget accordingly.

Sources:	Amount:	When Available:
Scholarship(s)		Varies by deadline, Reves scholarships will reduce your total balance due. You will find out if you've been awarded a Reves scholarship by the end of February.
Financial Aid (Loans, grants, through W&M)		First day of classes on campus or the first day of the summer program, whichever is LATER.
Savings		
Parental/Guardian support		
Other		
Total		

Preparation for the Camino

Former participants of this program have noted that the Pilgrimage can be physically and emotionally grueling – and rewarding. This program requires special preparation that other summer programs may not need.

Prior to the trip, you should test out your footwear by walking around on hard surfaces with a fully-laden traveler's backpack for extended periods of time. You might find it beneficial to purchase impact-reducing insoles for your shoes – again, test these out. You may find a bandanna to be a beneficial accessory – it can function as both a headscarf and as a napkin at meals. Consider how easily you can hand wash the clothing you bring with you – think lightweight, moisture-wicking for this journey. Plastic bags can help keep your clothing dry in your backpack. Be ruthless about cutting down on the amount of weight in your backpack prior to departure, as you will need to add plenty of water to your backpack for use during the day. Stay well-hydrated, and be sure to bring sunscreen to prevent painful sunburns. There are several useful packing lists online that past pilgrims have posted. It is to your advantage to research these websites, as many of them also provide information on the emotional part of their journey. Special attention to equipment and packing strategies for the hike will be paid during the spring semester course.

Traveling to Santiago de Compostela

NOTE: You are responsible for your own travel arrangements to and from Spain.

AIRPORT PICK-UP

You are responsible for your flight arrangements to Madrid and from Santiago at the end of the program. This means you will need to book a flight leaving from the US on May 28 to arrive in Spain May 29. Students will take a taxi to the hotel in Madrid. Information will be discussed in the 1 credit pre-course. Students must provide the Program Director with a copy of their flight schedules. After your hotel stay in Madrid, a bus will take the group to Leon, where you will begin to talk the Camino.

Students are strongly encouraged to plan travel arrangements together, either through Blackboard or Facebook.

The program officially ends June 16th. You will need to leave by that date or make arrangements for your own housing for that night and beyond. If you plan to stay in Santiago after that date, you will be responsible for organizing and incurring all additional housing and food costs. You have no commitments, academic or otherwise, to the program after that date.

Don't forget to call or email home!

As soon as possible following your arrival, remember to call or email your family to let them know you have arrived safely. This will not only save them from worry, but also help the Reeves Center from receiving panicked phone calls regarding your whereabouts.

Coursework

During your stay for the first week in Williamsburg, your classes will be held with Professors Allar and Riofrio.

CLASSES IN WILLIAMSBURG

NOTE: Some class materials are provided, while a few additional supplies should be purchased before traveling to Spain. These texts / materials / equipment will be discussed during the one credit preparatory course in the spring.

Excursions & Activities

LOCAL TRAVEL

Students' independent artistic exploration, research, and investigation will take them to various possible venues around Santiago, including city archives, libraries, museums, local pilgrims' hostels, and the Pilgrim's Office of the Cathedral of Santiago.

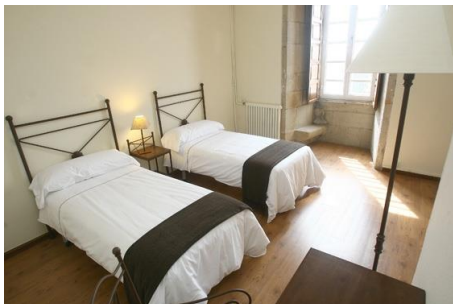


THE CATHEDRAL OF SANTIAGO

Housing and Meals

HOUSING

Students will be housed likely in Richmond Hall on campus for the first week of the program, arranged through Conference Services. Students will be housed in a hotel in Madrid, along the Camino, they will stay in hostels with other pilgrims. In both instances, laundry will be hand-washed by each student at the hotel (or at a local Laundromat), so be sure to pack lightweight and quick-drying clothing!



SAMPLE ROOM IN THE SAN MARTÍN PINARIO

MEALS

Breakfasts will be included, along with a meal stipend to cover other meals.

Communication

The GEO provides local cell phones and/or local SIM cards for all students on William & Mary summer programs with *homestays*. Students that are not participating in a program with a homestay are responsible for researching and arranging their communication plan.

PLACING INTERNATIONAL PHONE CALLS

See the "Handy Information" section for a time zone conversion chart before you call!

Calling Santiago from the United States: Dial 011 +-34 + Local Number

Calling the United States from Santiago: Dial 00-1+area code + phone number.

Emergency Numbers

Police: 112 or 092

Medical Emergencies: 112 or 061

Fire: 112 or 080

Health & Safety

IMMUNIZATION

Students are encouraged to consider updating standard immunizations against meningitis and tetanus. For current information concerning recommended protection against communicable diseases for those planning to travel abroad, you may check the Center for Disease Control's website at:

<http://wwwnc.cdc.gov/travel/destinations/spain.htm>

If you prefer to talk to someone in person about the currently recommended immunizations, you can call Travel Health of Williamsburg at 220-9008 (located at 287 McLaws Circle), or consult with a physician in your area who has some expertise concerning immunizations for international travel.

Formatted: Highlight

Travel & Country Information

We encourage all students to research their study abroad destination. The State Department has important information available online. Be sure to read up on Spanish history, culture, and current events before your arrival, as well. Knowing as much as possible about where you are going will not only make you more comfortable during your time in the country, but will also allow you to talk more knowledgeably with your host family and new friends.

U.S. Citizens - We strongly recommend that you register your travel plans with the U.S. State Department at this website:

<https://step.state.gov/step/>

This will help the State Department contact you if there is a family emergency in the U.S., or if there is a crisis where you are traveling. On this website you can find information ranging from geographic and political descriptions of the country, to special health and safety announcements.

About Santiago de Compostela



Santiago de Compostela is the capital of the autonomous community of Galicia in northwestern Spain. The city's old town is a UNESCO World Heritage Site. Santiago de Compostela is most famed for being the destination in the Way of St. James, a leading Catholic pilgrimage route originated in the 9th Century. St. James is reputedly buried in the Santiago de Compostela Cathedral, a Romanesque structure with Gothic and Baroque additions. The Cathedral was consecrated in 1128.

The city has roughly 100,000 residents, including a student population of about 40,000. Program participants will enjoy seeing the Praza do Obradoiro, which is the arrival point for pilgrims. The city itself is highly walkable.

El Camino



Santiago is perhaps best known for being the end point of the Way of St. James, or the Camino. This pilgrimage route has existed for over 1,000 years, and is generally considered one of the most important pilgrimages. The main pilgrimage route follows an earlier Roman trade route.

Famous symbols from the Camino include a scalloped shell, common along the Galician coast. These shells are also the perfect size for scooping out a drink of water or for use as a makeshift bowl. The pilgrim's stick, a walking stick with a hook for an ornament (usually a cross), is another famous symbol from this walk.

Contact Information

GLOBAL EDUCATION OFFICE CONTACTS

You may call the Reves Center and its advisors at the numbers below between 8am and 5pm (Virginia time), Monday through Friday. In case of an emergency that falls outside of these times, please call William & Mary Campus Police at +001 (757) 221-4596. Campus police will then forward your call to the correct person or office.

GEO Advisor: Molly DeStafney (mldestafney@wm.edu) - +001 (757) 221-3425

Reves Center for International Studies
College of William & Mary
P. O. Box 8795
Williamsburg, VA 23187-8795
Fax – (757) 221-3597

*To call the U.S. from abroad: 001+ (Area Code) + phone number

Nearest US Embassy: Madrid

Calle Serrano 75
28006 Madrid
Telephone : (34) 91 587 2240
Email: askacs@state.gov