
Global Education Office
Reves Center for International
Studies
The College of William & Mary



PHOTO COURTESY OF SYLVIA MITTERNDORFER

SANTIAGO DEL COMPOSTELA
SUMMER HANDBOOK

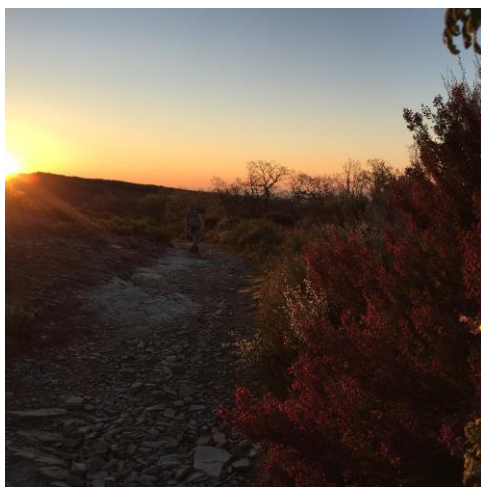
Table of Contents

Santiago de Compostela 2018.....	3
Handy Information.....	4
Overview, Dates, and Money.....	5
Visa Information and Budgeting.....	6
Preparation for the Camino.....	8
Packing.....	9
Traveling to Santiago De Compostela.....	11
Coursework.....	12
Excursions & Activities.....	12
Housing and Meals.....	14
Communication.....	15
Health & Safety.....	16
Travel & Country Information.....	17
Santiago de Compostela.....	18
El Camino.....	19
For Fun: Light Reading and Movies.....	20
Frequently Asked Questions.....	21
Contact Information.....	23

William & Mary

Santiago de Compostela 2018

This handbook offers guidelines that we hope you will find useful in making your preparations and while studying in Santiago de Compostela. Please read the handbook carefully before your departure and **bring it with you** to Spain, either as a paper or email copy. The program policies are included, along with lists of important items to bring with you, tips for handling your money, and precautions for safeguarding your health and belongings. In an effort to serve you best, the material in this handbook is edited each year and contains the latest information available to assist you in preparing for your trip. While we do our best to provide you with the most accurate information, inevitably some changes may take place and we will need to make adjustments. Your program co-directors and the Global Education Office Advisor at the Reves Center will keep you informed of any changes.



Handy Information

SUMMER HOLIDAYS AND EVENTS IN SPAIN		
Date	Holiday	Description
Late May/ Early June	Corpus Christi Festival	Religious festival celebrating the Eucharist and its elements, particularly the Holy Host.
Late June	Fiesta de los Juanillos	Night festival celebrating the start of summer
Late June	San Juan (St. John's Day)	Religious holiday

AVERAGE MIN/MAX TEMPERATURES IN SANTIAGO DE COMPOSTELA (°F)					
January	February	March	April	May	June
40/52	40/54	42/58	44/62	47/65	52/71
July	August	September	October	November	December
55/75	55/75	54/71	49/65	44/58	41/53

TIME ZONE COMPARISON: SANTIAGO DE COMPOSTELA IS 6 HOURS AHEAD OF VIRGINIA				
Pacific (US)	Mountain (US)	Central (US)	Eastern (US)	Santiago de Compostela
5:00am	6:00am	7:00am	8:00am	2:00 pm (14:00)
1:00pm	2:00pm	3:00pm	4:00pm	10:00 pm (22:00)
9:00pm	10:00pm	11:00pm	Midnight	6:00 am (next day)

Overview, Dates, and Money

PROGRAM OVERVIEW

- **Fees:** \$5,000
- **Program Co-Directors:** Matt Allar, Associate Professor of Theatrical Design and John Riofrio, Assistant Professor of Hispanic Studies
- **Accommodations:** Students will stay in a hotel, while in Santiago de Compostela. On the Camino, students will stay in a variety of housing scenarios including small hotels and hostels.
- **Meals:** During the walking portion of the program, breakfasts are typically included at each stay. Students will be provided a meal stipend to cover all other meals for the walking duration only.

PROGRAM DATES

- May 19 – June 13, 2018 (Students depart from Williamsburg on May 25)

1 CREDIT COURSE

Students will be automatically enrolled in a one credit pre-course after the spring semester has begun. Dates and times are to be determined by the Program Co-Directors and the participants.

MONEY

A note on currency: Regardless of the level of financial resources you may have available for your period of study abroad, all students share the same need to have quick access to their funds and, at the same time, to have their money protected against loss. The currency of Spain is the Euro (€) and is equivalent to the US dollar at a rate of approximately: \$1 US = 0.84€ Euros or €1 = \$1.19 USD (as of November 2017). You can check the current exchange rates on the web at <http://www.xe.com/ucc> or in the financial section of a large city newspaper.

Visa Information and Budgeting

TRAVEL DOCUMENTS

Passport

- You should apply as early as possible before departure to secure your passport through a Passport Agency (found in major cities), a local issuing office, a Federal or State Court House, or a Class I Post Office.
Start the process early so that there will be plenty of time to resolve any problems that may arise. If you will be using your current passport, make sure that it is good for six months after your return to the U.S. If it is not, you will need to renew it.
- Guidelines on renewing your passport or applying for a new one can be found at:
<https://travel.state.gov/content/passports/en/passports.html>



Visa

- No visa is necessary for American citizens for a stay in Spain of less than 90 days.
- If you are asked by immigration/custom officers at the airport for your intent of visit, you must tell them you are a tourist. Because you are in classes for less than 25 hours a week, you are considered a tourist by the Spanish government.

BUDGET

- Your budget for incidental expenses will depend on your personal taste and the amount of independent travel you intend to do before or after the program. The program fee covers most of your necessary expenses: tuition, housing, and transportation and entrance fees for program excursions, as well as a meal stipend that should cover most (if not all) of your meals while on the camino. Students in the past have suggested budgeting roughly \$100/week for outside activities, shopping, etc. It is very possible to live for considerably less than this. Naturally, if you plan to do a significant amount of shopping and/or traveling, you should budget accordingly. You will need to budget for meals during the week in Williamsburg.

Study Abroad Program Worksheet for Santiago

Expenses:	Amount:	When due:	Paid to W&M?	Paid out of pocket?
Program Fee	\$5000	Deposit March 2 nd , Balance April 2 nd	Yes	
Airfare	\$1600			Yes
Study Abroad Application Fee	\$75		Yes	
Meals	\$400			Yes
Local Travel				Yes
Visa, passport, photos		Prior to beginning of program		Yes
Books & supplies	\$100			
Misc./Personal	\$500			Yes
Total	\$8650			

Eating	Items	Average Price	Price Range
	Meal, Inexpensive Restaurant	\$10.33	\$10.66- \$11.99
	Combo Meal at McDonalds or Similar	\$8.63	\$8.59 - \$8.66
	Coke/Pepsi (0.33 liter can) restaurant price	\$2.27	\$2.00 - \$2.53
	Water(1.5 liter bottle)	\$0.63	\$0.47-0.80
	Milk (regular), 1 liter	\$1.17	\$1.00-1.33
	Cappuccino (regular)	\$2.66	
Living	Cinema, International Release, 1 Seat	\$8.00-8.70	
	1 min. of Prepaid Mobile (monthly)	\$0.20-0.32	
Traveling	Transportation Methods	Average Price	
	One-way Ticket (local transport)	\$1.67	
	Monthly Pass (Regular Price)	\$ 30.65	
	Taxi Rates	Taxi Start: \$3.33 Taxi 1km: \$1.87 Taxi 1hour Waiting: \$26.65	

Sources:	Amount:	When Available:
Scholarship(s)		Varies by deadline, Reves scholarships will reduce your total balance due. You will find out if you've been awarded a Reves scholarship by the end of February.
Financial Aid (Loans, grants, through W&M)		First day of classes on campus or the first day of the summer program, whichever is LATER.
Savings		
Parental/Guardian support		
Other		
Total		

Preparation for the Camino

Former participants of this program have noted that the Pilgrimage can be physically and emotionally grueling – and rewarding. This program requires special preparation that other summer programs may not need. The one credit spring preparatory.

Prior to the trip, you should test out your footwear by walking around on hard surfaces with a fully-laden traveler's backpack for extended periods of time. You might find it beneficial to purchase impact-reducing insoles for your shoes – again, test these out. You may find a bandanna to be a beneficial accessory – it can function as both a headscarf and as a napkin at meals. Consider how easily you can hand wash the clothing you bring with you – think lightweight, moisture-wicking for this journey. Plastic bags can help keep your clothing dry in your backpack. Be ruthless about cutting down on the amount of weight in your backpack prior to departure, as you will need to add plenty of water to your backpack for use during the day. Stay well-hydrated, and be sure to bring sunscreen to prevent painful sunburns. There are several useful packing lists online that past pilgrims have posted. It is to your advantage to research these websites, as many of them also provide information on the emotional part of their journey. Special attention to equipment and packing strategies for the hike will be paid during the spring semester course.

Packing

PACKING TIPS

General

- Many items you need can be purchased once you've arrived at your destination. For example, bring travel-sized toiletries to keep your bags light, and purchase full-sized items once you've arrived.
- Do not bring any items of sentimental value that you couldn't bear to lose.
- Bring a small, light first aid kit with items such as bandages, antiseptic wipes, and the like. Some websites also suggest bringing other items, such as an antifungal cream – it is strongly recommended that you consider bringing items listed by previous travelers of the Camino.

Luggage

- **Pack only what you can carry by yourself for relatively long distances.** You will need a traveler's backpack – REI or any other outdoor equipment stores will have a variety of packs to choose from, and will help fit one to you.
- Do not pack valuables in your checked luggage.
- Put address labels and contact information inside and outside each piece of luggage.
- Pack medications in your carry-on luggage.
- Plan to bring all prescription medications with you for your entire time in Spain. Do not rely on local pharmacies to renew or fill existing prescriptions.
- Pack all sharp objects securely in your checked baggage.
- Pack all liquids in plastic bags to avoid leakage during travel.
- Place your camera in your carry-on. If you take film, carry it in a lead-lined travel pouch (available at camera stores).
- Put TSA-approved locks on all of your luggage so that it can be opened without the lock or bag being destroyed.

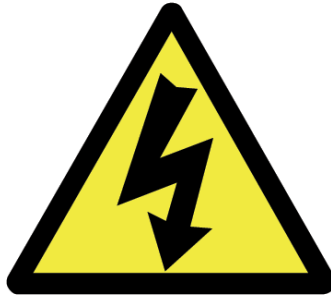
Clothes

- Bring easy care clothing items that are lightweight, drip dry, and wrinkle-proof, such as knits, permanent press, and cotton clothes. Dark colors are more practical than light, as they do not show dirt as easily. Moisture wicking clothing that dries quickly is highly recommended for this trip.
- Make sure you bring comfortable hiking shoes. Test them prior to leaving the trip while wearing your fully-packed backpack.
- Bring clothes that you can layer for various temperatures. water-repellant jacket is strongly recommended.
- Bring one nice outfit for presentations and receptions.
- Roll clothes instead of folding them; you will fit more in the bag, and have fewer wrinkles upon arrival.

Other Items

- Bring a lightweight sleeping bag and an inflatable pillow.
- A miniature Swiss army knife and some needle and thread could become your best friends on this trip!
- Cable ties, a whistle, and a compass are also recommended by several former pilgrims.

For more tips, please consult the Summer Study Abroad Manual, as well as the "Know Before You Go" section of this handbook.



AN IMPORTANT NOTE ON ELECTRICITY IN SANTIAGO DE COMPOSTELA

Electricity in Spain is 230 volts, 50 cycles alternating current (AC). For comparison, in the United States it is 110 volts, 60 cycles AC current.

If you plan on using your own 110-volt appliances, you will need a voltage converter, unless your appliance is designed to also work with 220 volts electricity (dual voltage). For example, most laptop and camera chargers are designed to work both at 110 and 220 volts. **Plugging in an appliance that is not designed to run on 220 volts electricity without using voltage converter will most likely kill it and may cause fire!**

Regardless of voltage, if your appliance has flat prongs, you will need a plug adapter: Spanish sockets are designed to accept round prongs. Do get one before your leave!

As a matter of fact, Spanish plugs can be of two different sizes. Some sockets will take in the plugs with large prongs only, some other will take in the ones with small prongs (more common for small appliances; large prongs are used for demanding appliances such as refrigerators and washing machines). Regardless of prong size, **the outlets all produce 220 volts!**



Traveling to Santiago de Compostela

NOTE: You are responsible for your own travel arrangements to and from Spain.

AIRPORT PICK-UP

You are responsible for your flight arrangements to and from Spain, but it is preferred that the group travel together for the sake of convenience. Everyone will be leaving from Williamsburg to Spain on May 25th and will arrive on the 26th. Student should plan to arrive in MADRID and leave from Santiago on the 13th of June. Students will be turning in final assignments sometime later in the summer, tentatively August 15th.

The Program Co-Directors will provide you with more information in regards to the flight times that they are planning to use. Again, you are encouraged to book the same flight as the faculty. If you do not, you will be asked to arrive within a 4 hour window of their arrival times. Please note that if you have any delays on your flights, you may arrive separately from the group and have to find your own way to the hotel in Madrid.

Students are strongly encouraged to plan travel arrangements together, either through Blackboard or Facebook.

The program officially ends June 13th. You will need to leave by that date or make arrangements for your own housing for that night and beyond. If you plan to stay in Santiago after that date, you will be responsible for organizing and incurring all additional housing and food costs. You have no commitments, academic or otherwise, to the program after that date.

More information will be made available via the Program Co-Directors.

Don't forget to call or email home!

As soon as possible following your arrival, remember to call or email your family to let them know you have arrived safely. This will not only save them from worry, but also help the Reves Center from receiving panicked phone calls regarding your whereabouts.

Coursework

During your stay in Williamsburg, the group will be meeting daily for classes on the W&M campus.

CLASSES IN SANTIAGO DE COMPOSTELA

Once arriving in Santiago de Compostela, there may be some classes held at site in the hotel meeting spaces.

NOTE: Some class materials are provided, while a few additional supplies should be purchased before traveling to Spain. These texts / materials / equipment will be discussed during the one credit preparatory course in the spring.

Courses on this program focus on pilgrimage studies, and identity (individual, local, and national) and include:

Courses
HISP 389 (COLL 200/ALV): Hike and Seek: Pilgrimage and the Global Search for Joy (3 credits)
THEA 460 (COLL 200/ALV): Right Here, Right Now: Site Specific Art (3 credits)

Excursions & Activities

LOCAL TRAVEL

Students' independent artistic exploration, research, and investigation will take them to various possible venues around Santiago, including city archives, libraries, museums, local pilgrims' hostels, and the Pilgrim's Office of the Cathedral of Santiago.



THE CATHEDRAL OF SANTIAGO

PHOTO COURTESY OF SACRED-DESTINATIONS.COM

GUIDEBOOKS

Consider purchasing a travel guidebook prior to leaving the United States to help you make personal travel plans. These can be purchased at bookstores like Barnes & Noble, or online. Some guidebook publishers include:

- *Fodor's* (<http://www.fodors.com>)
- *Let's Go* (<http://www.letsgo.com>)
- *Lonely Planet* (<http://www.lonelyplanet.com>)
- *Rick Steves' Books* (http://www.ricksteves.com/books/update/update_menu.htm)

Housing and Meals

HOUSING

Students will be stay in double rooms in Williamsburg. Along the Camino, they will stay in hostels with other pilgrims. In both instances, laundry will be hand-washed by each student at the hotel (or at a local Laundromat), so be sure to pack lightweight and quick-drying clothing! Once in Santiago, students will be housed in pilgrim hotels.



SAMPLE ROOM IN THE SAN MARTÍN PINARIO

MEALS

For the duration of the Camino, breakfasts will be included, along with a meal stipend to cover other meals. In Williamsburg, students should budget for their own meals.

Communication

ONLINE

While many hostels have wifi available to guests; previous guests have indicated that the internet may be more challenging to find, so plan to be less “plugged in” than normal during your stay.

PHONES

To place local calls within Spain, it will be most economical to purchase a phone card (modestly priced and widely available at *tabaco* shops or at newspaper kiosks, for example). This *tarjeta telefonica* is sold in different increments, with pre-paid phone time. It is recommended for usage in all public phone booths and with public-use phones in local establishments. These cards can be used to call anywhere locally or in the country. They also may be used for international calls, but of course the credit expires much more quickly if calling outside of Spain, so for international calls it is advisable, once you are in Spain, to purchase a *tarjeta telefonica* specifically for this purpose, as it will be much more economical. Use of these calling cards available for purchase on site is all you need to call home while in Spain.

The Global Education Office provides cell phones for all students on this program.

PLACING INTERNATIONAL PHONE CALLS

See the “Handy Information” section for a time zone conversion chart before you call!

Calling Spain from the United States: Dial 011+ 34 + (Cádiz = 56, Madrid = 1)+ phone number.

Calling the United States from Spain: Dial 001+ phone number.

Emergency Numbers

General Emergency / Police: 112

Health & Safety

IMMUNIZATION

Students are encouraged to consider updating standard immunizations against meningitis and tetanus. For current information concerning recommended protection against communicable diseases for those planning to travel abroad, you may check the Center for Disease Control's website at:

<http://wwwnc.cdc.gov/travel/destinations/spain.htm>

If you prefer to talk to someone in person about the currently recommended immunizations, you can call Travel Health of Williamsburg at 220-9008 (located at 287 McLaws Circle), or consult with a physician in your area who has some expertise concerning immunizations for international travel.

STAYING WELL/GETTING SICK

Useful information on preparing for medical emergencies before you go abroad is provided at <http://travel.state.gov/content/passports/english/go.html>.

If you become ill, please ask your Program Co-Directors for assistance in finding you medical care. Please remember to pay for any medical care at the time it is received, and to keep your receipts to submit to your insurance company for reimbursement upon your return.

For routine ailments such as colds, sunburn, stomach upset, etc. the pharmacists in Spain are trained to provide appropriate advice and remedies. The pharmacies in Spain are designated with a green neon sign showing a snake on the shape of a cross. On a rotating basis, certain pharmacies (*farmacias de guardia*) are open after-hours (list of addresses of those that are open are posted on pharmacy windows). You will find that many American over the counter medications are available in Spain, but at much higher prices than in the US. By contrast, Spanish products recommended by the local pharmacist may be much less expensive than equivalents in an American pharmacy. It is strongly recommended that students plan ahead for any/all routine and/or prescription medication needs for the entire length of their time abroad.

For the duration of the program, the Co-Directors are always available to assist students in obtaining medical care.

Travel & Country Information

We encourage all students to research their study abroad destination. The State Department has important information available online. Be sure to read up on Spanish history, culture, and current events before your arrival, as well. Knowing as much as possible about where you are going will not only make you more comfortable during your time in the country, but will also allow you to talk more knowledgeably with your host family and new friends.

We strongly recommend that you register your travel plans with the U.S. State Department at this website:

<https://step.state.gov/step/>

This will help the State Department contact you if there is a family emergency in the U.S., or if there is a crisis where you are traveling. On this website you can find information ranging from geographic and political descriptions of the country, to special health and safety announcements.

Santiago de Compostela



Santiago de Compostela is the capital of the autonomous community of Galicia in northwestern Spain. The city's old town is a UNESCO World Heritage Site. Santiago de Compostela is most famed for being the destination in the Way of St. James, a leading Catholic pilgrimage route originated in the 9th Century. St. James is reputedly buried in the Santiago de Compostela Cathedral, a Romanesque structure with Gothic and Baroque additions. The Cathedral was consecrated in 1128.

The city has roughly 100,000 residents, including a student population of about 40,000. Program participants will enjoy seeing the Praza do Obradoiro, which is the arrival point for pilgrims. The city itself is highly walkable.

El Camino



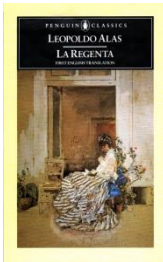
Santiago is perhaps best known for being the end point of the Way of St. James, or the Camino. This pilgrimage route has existed for over 1,000 years, and is generally considered one of the most important pilgrimages. The main pilgrimage route follows an earlier Roman trade route.

Famous symbols from the Camino include a scalloped shell, common along the Galician coast. These shells are also the perfect size for scooping out a drink of water or for use as a makeshift bowl. The pilgrim's stick, a walking stick with a hook for an ornament (usually a cross), is another famous symbol from this walk.

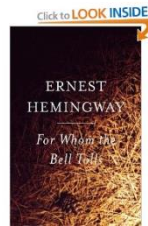
For Fun: Light Reading and Movies

Following are a few books regarding Spain. Check them out, or consider looking for other books to put you in a Spain mood prior to – or during – your time abroad. Don't worry; you won't be tested on them!

Books

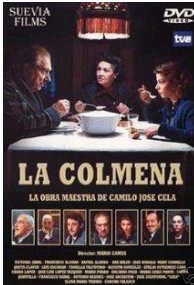


LA REGENTA
By Leopoldo Alas y Ureña

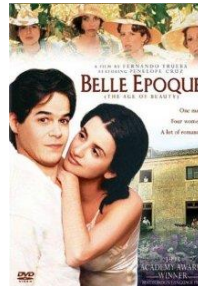


FOR WHOM THE BELL TOLLS
By Ernest Hemingway

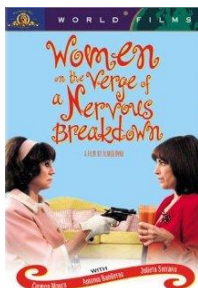
Movies



LA COLMENA



BELLE EPOQUE



WOMEN ON THE
VERGE OF A
NERVOUS
BREAKDOWN



LA COMUNIDAD

Frequently Asked Questions

Will I need a visa?

A visa for study is not required. According to the Spanish government, you are not considered a student because you aren't in class for 25 hours per week. If asked upon arrival, you are tourist for visa purposes. Only a valid passport is required.

What airport will I fly into? Do all W&M students travel together on the same flights?

Please refer to the section in this handbook on "Traveling to Santiago" for specific information.

Can I arrive earlier or stay longer than the program dates?

Yes, but you will only be able to stay *after* the program concludes due to needing to be on campus for the week prior to going to Spain. Please note that staying beyond the day of June 13th, you are responsible for making your own accommodation arrangements. You will **NOT** be able to stay in the housing provided during the program.

If my family or friends visit, may they stay with me?

No, they will need to make their own arrangements for accommodations. Please advise your program co-directors if you expect family or friends to visit you during the program.

Am I required to participate in all excursions provided by the program?

Yes, unless your program co-directors say otherwise. The excursions supplement the coursework and expand cultural learning.

Will I need to seek post approval for the courses I take?

No, all of the courses offered in the W&M faculty-led summer programs have already been approved.

Will my grades be posted on my transcript?

Yes, the grades you receive will be posted on your W&M transcript and will be calculated into your GPA.

Can I take class pass/fail?

No, this is not an option.

How much spending money will I need?

That varies on your normal spending habits, especially in regards to eating meals out and how much shopping you like to do. Former students have indicated they spent on average Students reported spending between \$500-1,000 during the program. Most students reported spending \$750 or more, but again this depends on your personal spending habits. Former students DO NOT recommend traveler's checks. They recommend carrying some cash and your credit or debit card.

Contact Information

GLOBAL EDUCATION OFFICE CONTACTS

You may call the Reves Center and its advisors at the numbers below between 8am and 5pm (Virginia time), Monday through Friday. In case of an emergency that falls outside of these times, please call William & Mary Campus Police at +001 (757) 221-4596. Campus police will then forward your call to the correct person or office.

GEO Advisor: Molly DeStafney (mldestafney@wm.edu) - +001 (757) 221-3425

Reves Center for International Studies
College of William and Mary
P. O. Box 8795
Williamsburg, VA 23187-8795
Fax – (757) 221-3597

*To call the U.S. from abroad: 001+ (Area Code) + phone number

SAN MARTÍN PINARIO

Phone: +34-981-560-282

Email: reservas@sanmartinpinario.edu

Program Co-Directors:

Matt Allar
Associate Professor of Theatrical Design
mjallar@wm.edu

John Riofrio
Director of Latin American Studies
Associate Professor of Hispanic Studies
jdriofrio@wm.edu

Nearest US Embassy: Madrid
Calle Serrano 75
28006 Madrid
Telephone : (34) 91 587 2240
Email: askacs@state.gov